

Sonata for Recorder Consort

in F major

Edward Cree

Vivace

Score for Soprano I, Soprano II, Alto, Tenor, and Bass, measures 1-10.

Key: F major (one flat). Time signature: 3/4.

Dynamic markings: *p* (piano), *mf* (mezzo-forte), *mp* (mezzo-piano).

Measures 1-7: Soprano I and II are silent. Alto, Tenor, and Bass play a rhythmic pattern of dotted half notes and quarter notes.

Measures 8-10: Soprano I and II enter with a melody starting on G4, marked *p*. Alto, Tenor, and Bass continue their pattern, marked *mf*.

Score for Soprano I, Soprano II, Alto, Tenor, and Bass, measures 11-20.

Measures 11-20: Soprano I and II continue their melody, marked *mf*. Alto, Tenor, and Bass continue their pattern, marked *mf*.

22

S I  *p*
 S II  *mp*
 A  *mp* *mp*
 T  *mf*
 B  *mp* *mf*

33

S I  *p*
 S II  *p*
 A 
 T 
 B 

43

S I *mp* *mf*
 S II *mp*
 A *mp*
 T *mp*
 B *mp*

51

S I
 S II
 A
 T
 B

58

S I *mp*
 S II *mp*
 A
 T *mf*
 B *mf*

66

S I
 S II
 A *mf*
 T
 B

73

S I
 S II
 A
 T
 B

80

S I
 S II
 A
 T
 B

90

Score for Soprano I (S I), Soprano II (S II), Alto (A), Tenor (T), and Bass (B) parts, measures 90-98. The key signature is one flat (B-flat).

Measures 90-98. The key signature is one flat (B-flat).

99

Score for Soprano I (S I), Soprano II (S II), Alto (A), Tenor (T), and Bass (B) parts, measures 99-103. The key signature is one flat (B-flat). The dynamic marking *mp* (mezzo-piano) is indicated for measures 99-103.

Measures 99-103. The key signature is one flat (B-flat). The dynamic marking *mp* (mezzo-piano) is indicated for measures 99-103.

104

Score for Soprano I (S I), Soprano II (S II), Alto (A), Tenor (T), and Bass (B) starting at measure 104. The music is in G major (one flat) and 4/4 time. The Soprano parts feature melodic lines with eighth and quarter notes, while the Alto, Tenor, and Bass parts provide harmonic support with various rhythmic patterns including eighth and sixteenth notes.

108

Score for Soprano I (S I), Soprano II (S II), Alto (A), Tenor (T), and Bass (B) starting at measure 108. The music continues in G major (one flat) and 4/4 time. The Soprano parts have more rests and longer note values, while the Alto, Tenor, and Bass parts continue with active rhythmic patterns, including sixteenth and eighth notes.

112

S I
 S II
 A
 T
 B

117

S I
 S II
 A
 T
 B

126

S I
 S II
 A
 T
 B

137

S I
 S II
 A
 T
 B

rall.

mf

mf

mf

mf

mf

Soprano I

Sonata for Recorder Consort

in F major

Edward Cree

Vivace

Soprano Recorder

17

S. Rec.

30

S. Rec.

49

S. Rec.

56

S. Rec.

66

S. Rec.

76

S. Rec.

86

S. Rec.

96

S. Rec.

104

S. Rec.

p *mf* *p* *p* *mp* *mf* *mp* *p* *mp* *p* *mp*

110

S. Rec.

mf

118

S. Rec.

mp

129

S. Rec.

rall.

mf

142

S. Rec.

Soprano II

Sonata for Recorder Consort

in F major

Edward Cree

Vivace

Soprano Recorder

7

p *mf*

17

S. Rec.

mp

28

8

5

p *mp*

51

S. Rec.

mp

62

S. Rec.

73

3

p

85

S. Rec.

mp

95

S. Rec.

mp

104

S. Rec.

110

S. Rec.

117

S. Rec.

mf *mp*

128

S. Rec.

139

S. Rec.

rall. *mf*

Alto

Sonata for Recorder Consort

in F major

Edward Cree

Vivace

Alto Recorder

mp *mf*

13
A. Rec.

mp

26
A. Rec.

mp

38
A. Rec.

mp

50
A. Rec.

mp

68
A. Rec.

mf

79
A. Rec.

p *mf*

92
A. Rec.

mp *mp*

107
A. Rec.

112

A. Rec.

mp

125

A. Rec.

138

A. Rec.

rall.

mf

Tenor

Sonata for Recorder Consort

in F major

Edward Cree

Vivace

Tenor Recorder

mp *mf*

12

T. Rec.

25

T. Rec.

mf

38

T. Rec.

mp

50

T. Rec.

mf

62

T. Rec.

70

T. Rec.

77

T. Rec.

p *mp*

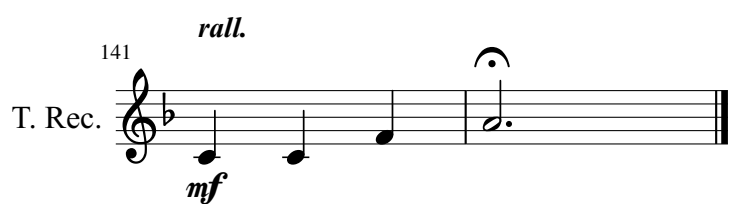
87

T. Rec.

98

T. Rec.

mp



Bass

Sonata for Recorder Consort

in F major

Edward Cree

Vivace

Bass Recorder 

13

B. Rec. 

27

B. Rec. 

38

B. Rec. 


49

B. Rec. 

63

B. Rec. 

72

B. Rec. 

82

B. Rec. 

95

B. Rec. 

103

B. Rec. 

108



114



121



135

