

## Vocals

## Widcombe Fair

for singer and recorder quartet

trad., arr. E. Cree

 $\text{♩} = 60$ 

3

*mf* Tom Pearse Tom Pearse lend me your grey mare all a - long down a -

10 long out a - long lea For I want for to go to Wi - de-combe Fair wi' Bill Brewer Jan

18 Stewer Pe-ter Gur-ney Pe-ter Da - vy Dan'-l Whiddon Har-ry Hawke Old Un - cle Tom

24 Cob-ley and all Old Un-cle Tom Cob-ley and all And when shall I see a -

33 gain my grey mare all a - long down a - lo - ng out a - long lea By Fri - day soon or Sa-tur-day

42 noon Wi' Bill Brewer Jan Stewer Pe-ter Gur-ney Pe-ter Da - vy Dan'-l Whiddon Har-ry

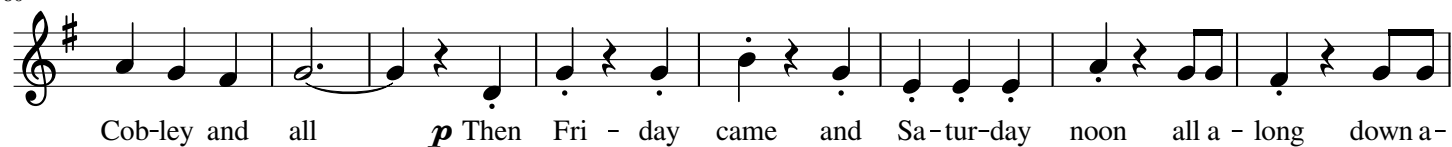
48 Hawke Old Un-cle Tom Cob-ley and all Old Un-cle Tom Cob-ley and all So they

57 har-nessed and bri - dled the old grey mare all a - long down a - long out a - long lea And

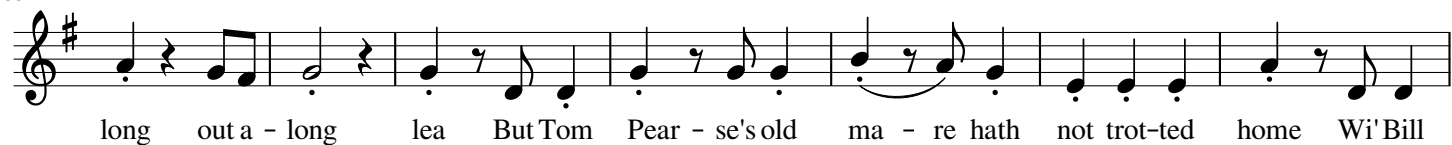
65 off they dro - ve to Wid - e - combe Fair Wi' Bill Brewer Jan Stewer Peter Gur-ney Peter

72 Da-vy Dan'-l Whiddon Harry Hawke Old Un-cle Tom Cob-ley and all Old Un-cle Tom

80



88



95



101



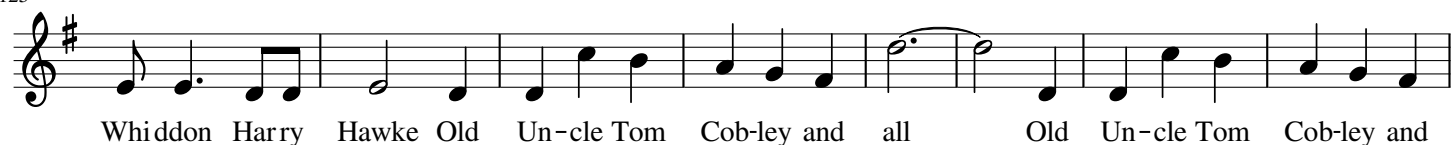
110



118



125



133



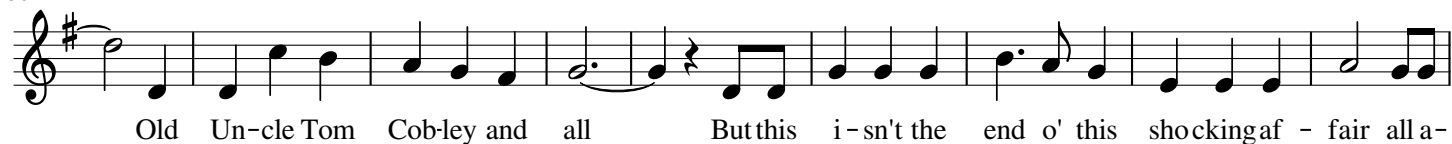
141



149



156



165



173



179



187



195



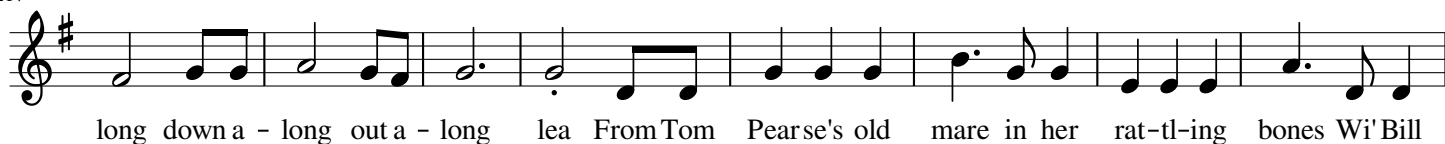
201



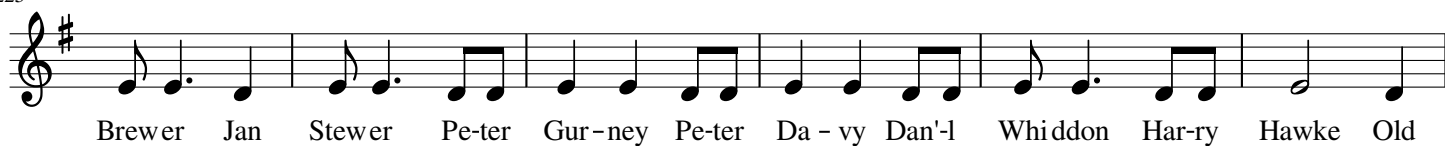
209



217



225



231

